

Rebel Walls®

• CLAIM YOUR SPACE •



HOME

Claim your space

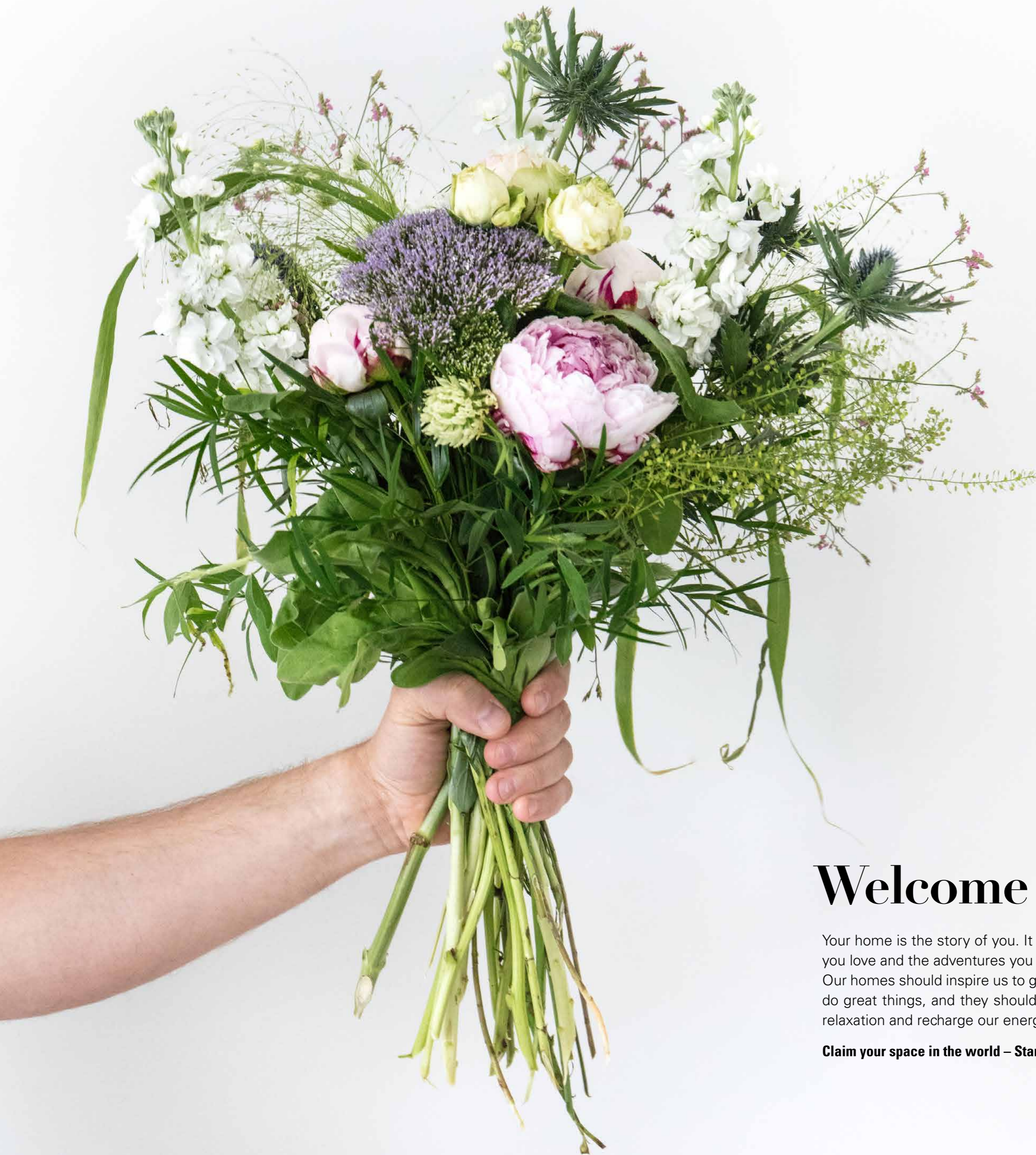
Everybody needs a place to claim as their own. A quiet hideaway where you set the rules.
These places go under many names: hobby room, library, garage, walk-in closet...
No matter what you call them – claim them.

Rebel Walls provides the tools to solve a universal need by offering
an infinite assortment of wall murals and the knowledge of how to choose.

Be a rebel – Claim your space!







Welcome Home

Your home is the story of you. It is a collection of what you love and the adventures you have taken.

Our homes should inspire us to go out into the world to do great things, and they should welcome us back for relaxation and recharge our energy.

Claim your space in the world – Start at home!

CHAPTERS



ENTER | PAGE 6-17



EAT | PAGE 18-29



RELAX | PAGE 30-41



WORK | PAGE 42-53



PLAY | PAGE 54-65



SLEEP | PAGE 66-77

ENTER

An entrance is like a first impression. It should smile, welcome you inside and bid you farewell.




An entrance is often a small area. Create an illusion of depth and more space with a photo wall mural.



Forest Glade

Stand in quiet in a forest where only nature makes the sounds, surrounded by walls of endless trees.

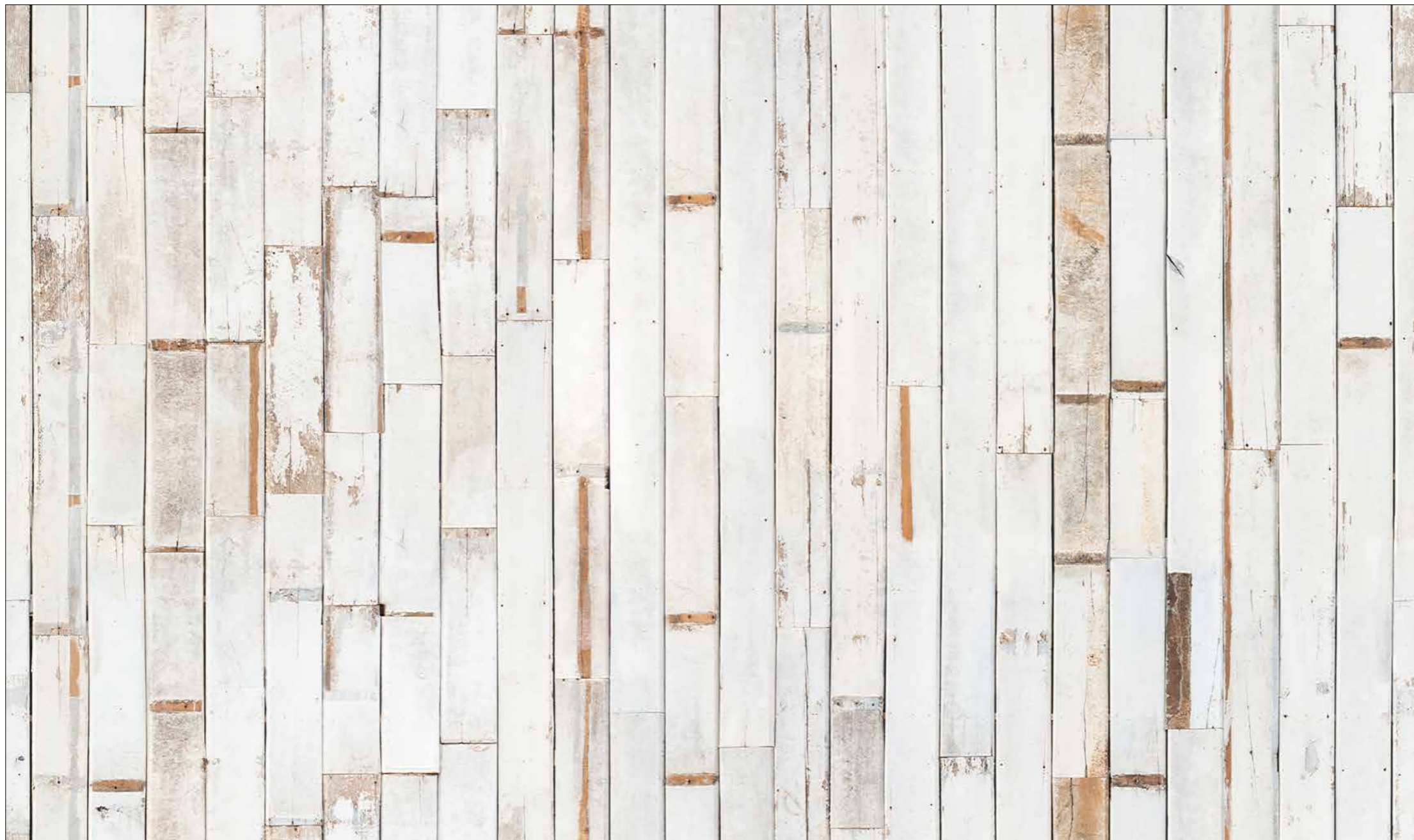



R15201 



Bali Boards

White boards, seemingly collected from different old houses, are the perfect substitute for white painted walls.




R14701 



Brooklyn Wall

Roughness from a New York building right in your home.



R14981 



A white cabinet with multiple drawers, some with silver handles, and a framed picture of insects on top.

A white coat rack with a black bag and a pair of black boots hanging from it.

A white door with a window and a handle, set in a white frame.


A grey metal chair with a curved backrest.

A light-colored, fringed rug on the floor.

Metal Birch


Combining the versatile look of birches with the scratchy feel of industrial metal.



R15221 

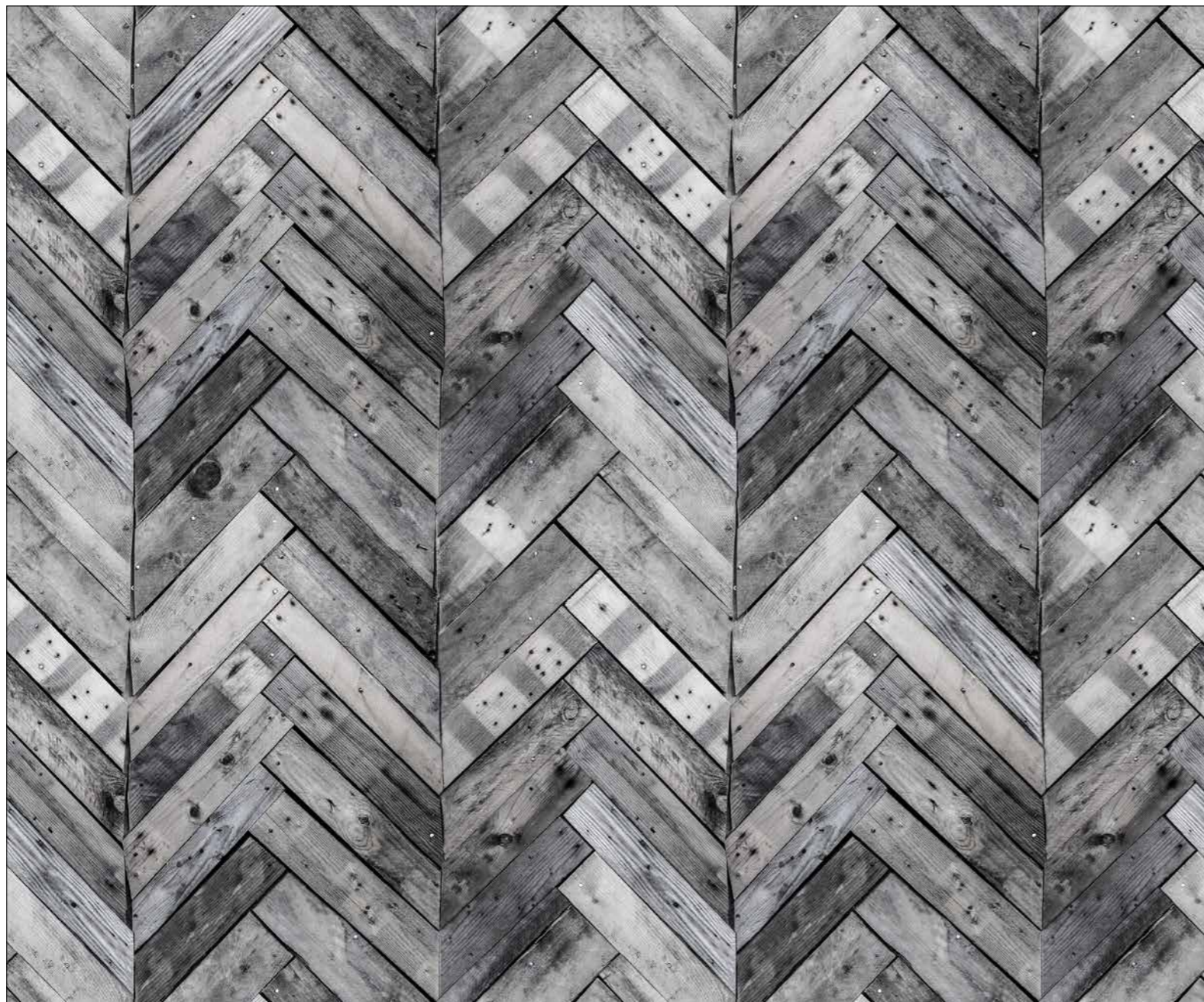





R15161 

West Coast

Well-worn boards in a unique herringbone pattern.
Just as lovely on a feature wall as in a whole room.

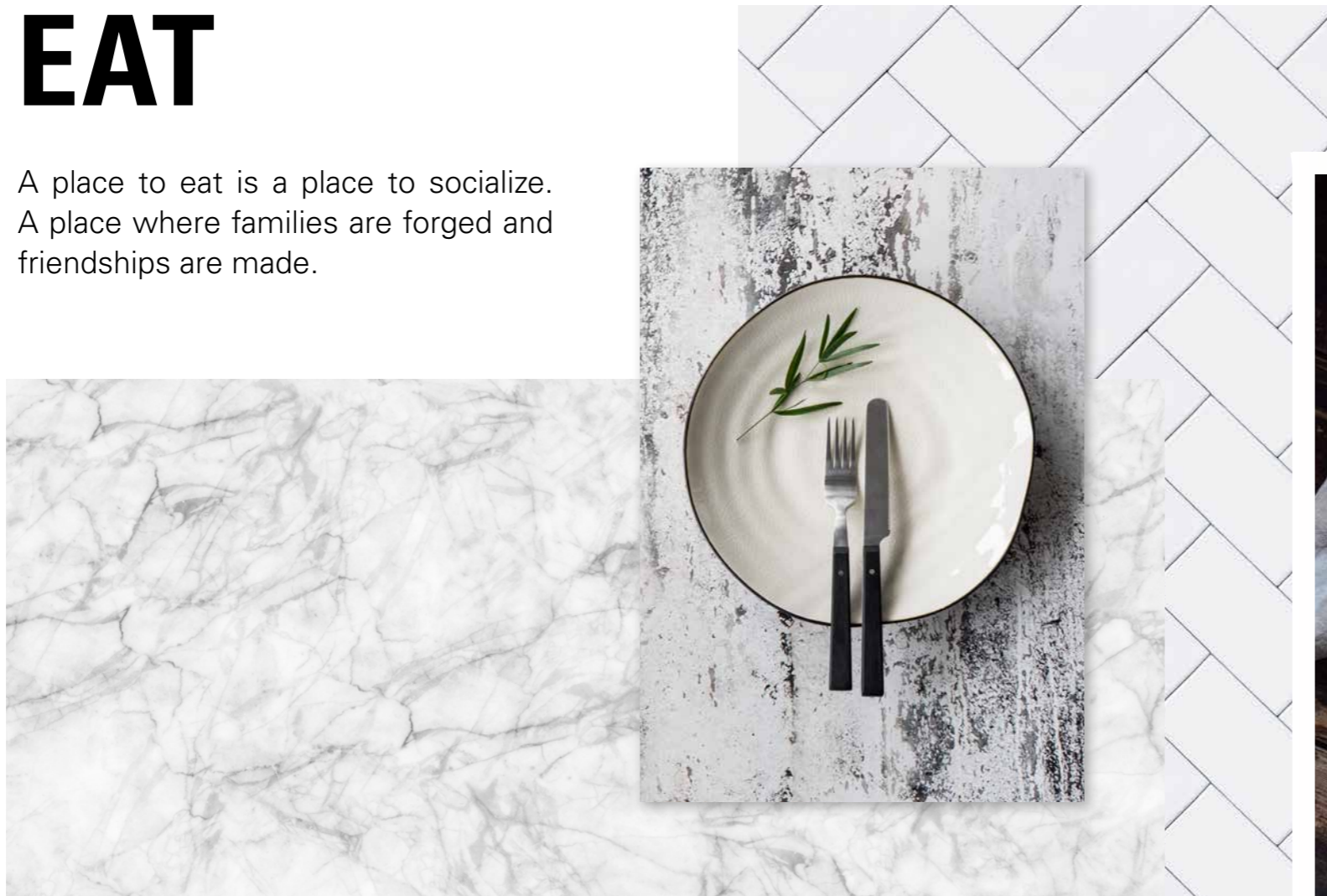


R15162 

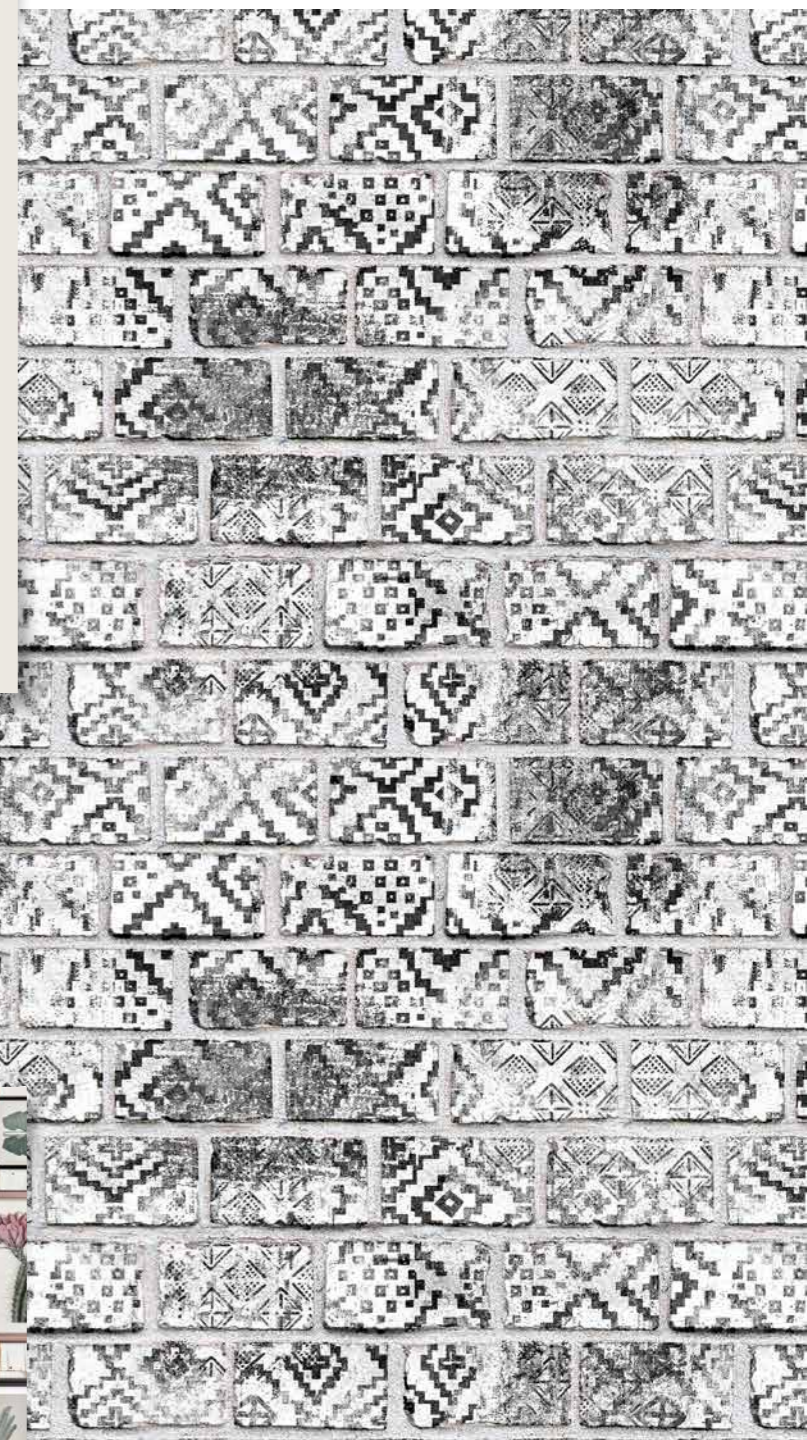


EAT

A place to eat is a place to socialize.
A place where families are forged and
friendships are made.



A cool wall mural
can be a welcomed
conversation starter
at a dinner party.







Cactus Wall Art

Struggling to create the perfect wall of pictures?
Here's a ready-made for you.



R15321 




R15322 



Fishbone Tiles

Herringbone pattern is one of the most exclusive constructions for tiles or flooring.
This one is yours in an instant but from a new angle.




R14781 



Marble Art

Classic, luxurious and irregular. Marble brings elegance to your home.



R15181 



Venice

Life is a journey, not a destination.
What better way to remind yourself than with a beautiful view of the Venetian canals.

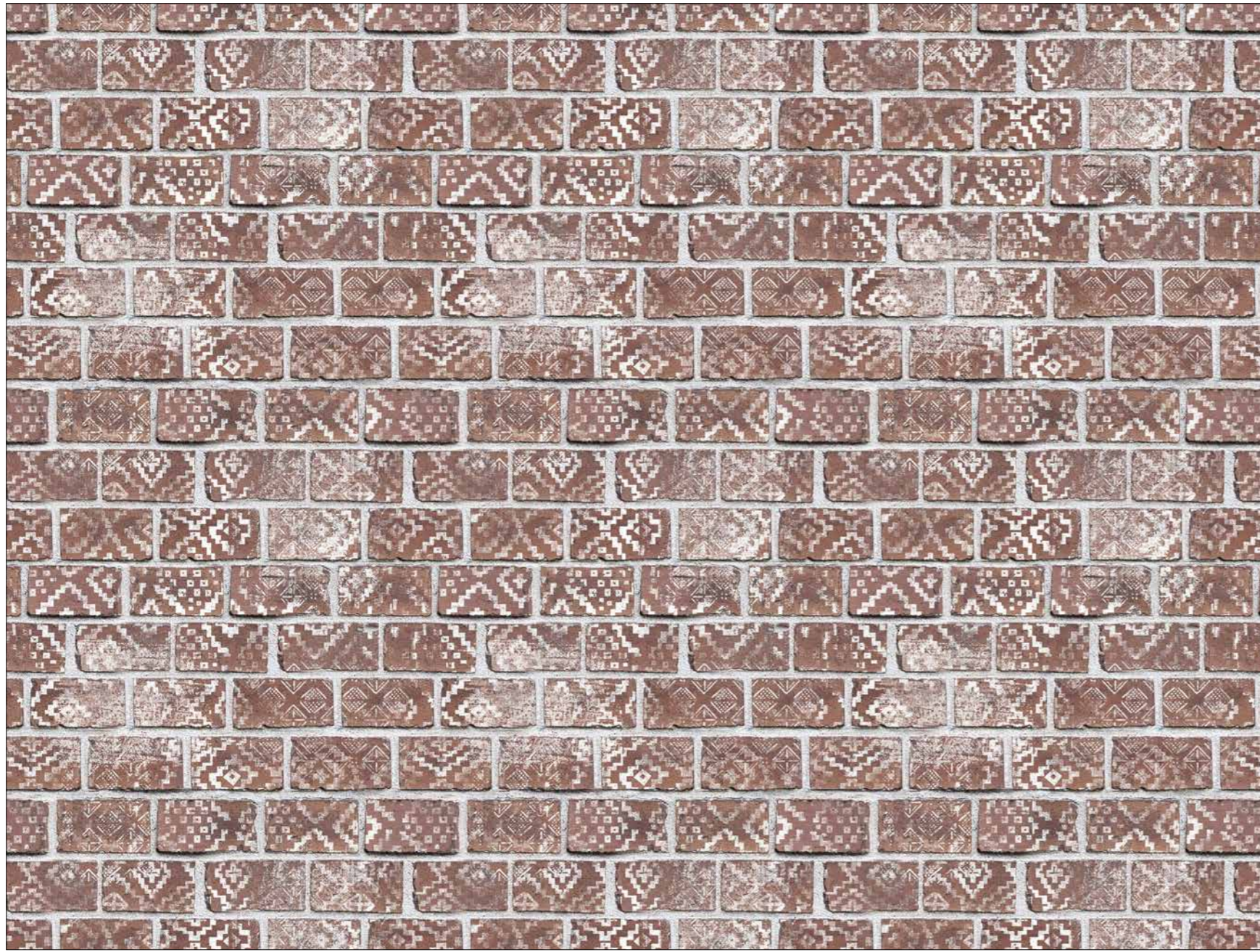



R15191

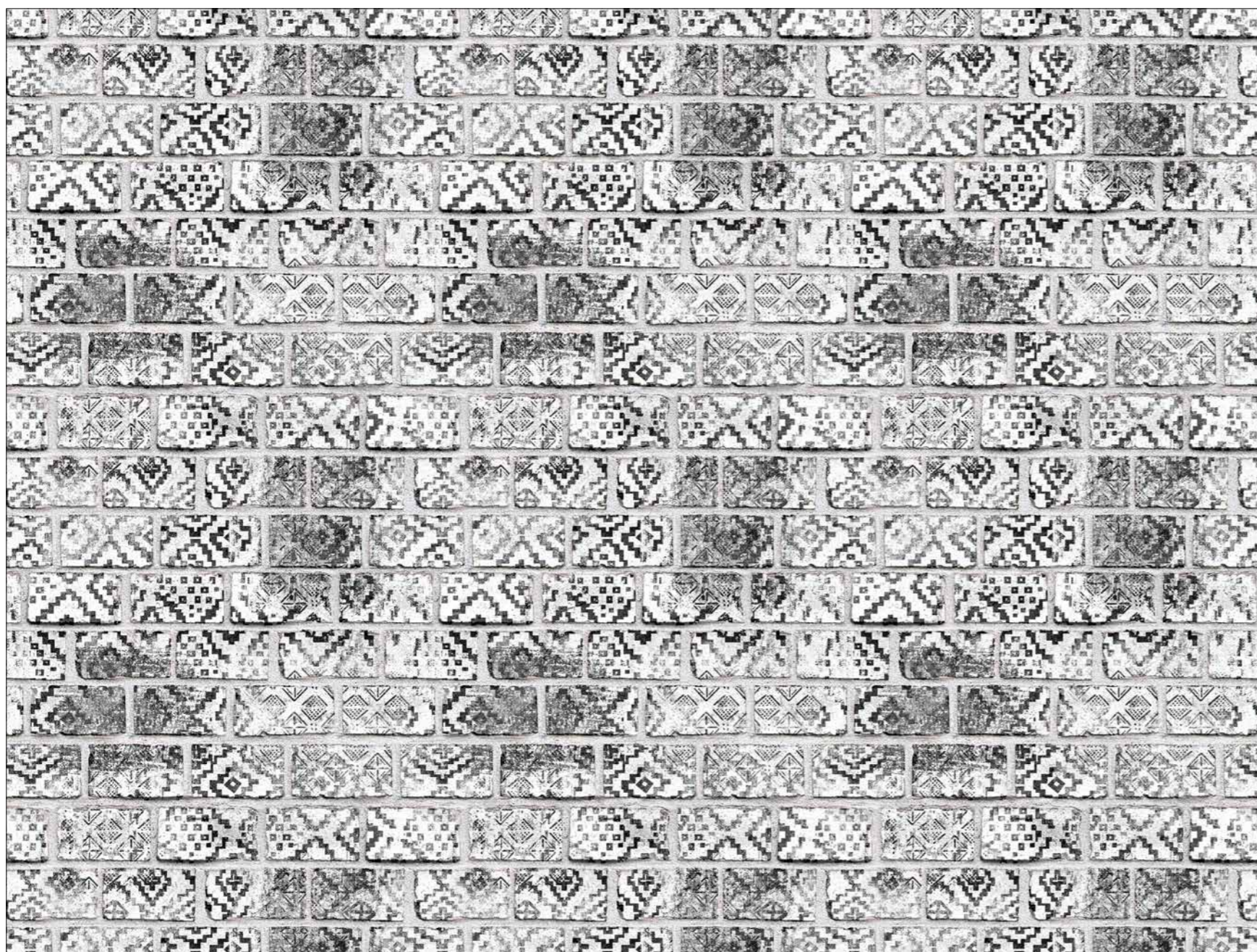



Decorated Bricks

Brick walls make natural patterns and color variations in themselves, and this one comes with a painted twist.



R15231 



R15232 



RELAX

The living room is where life happens. It is the heart of your home and the library of happy moments.

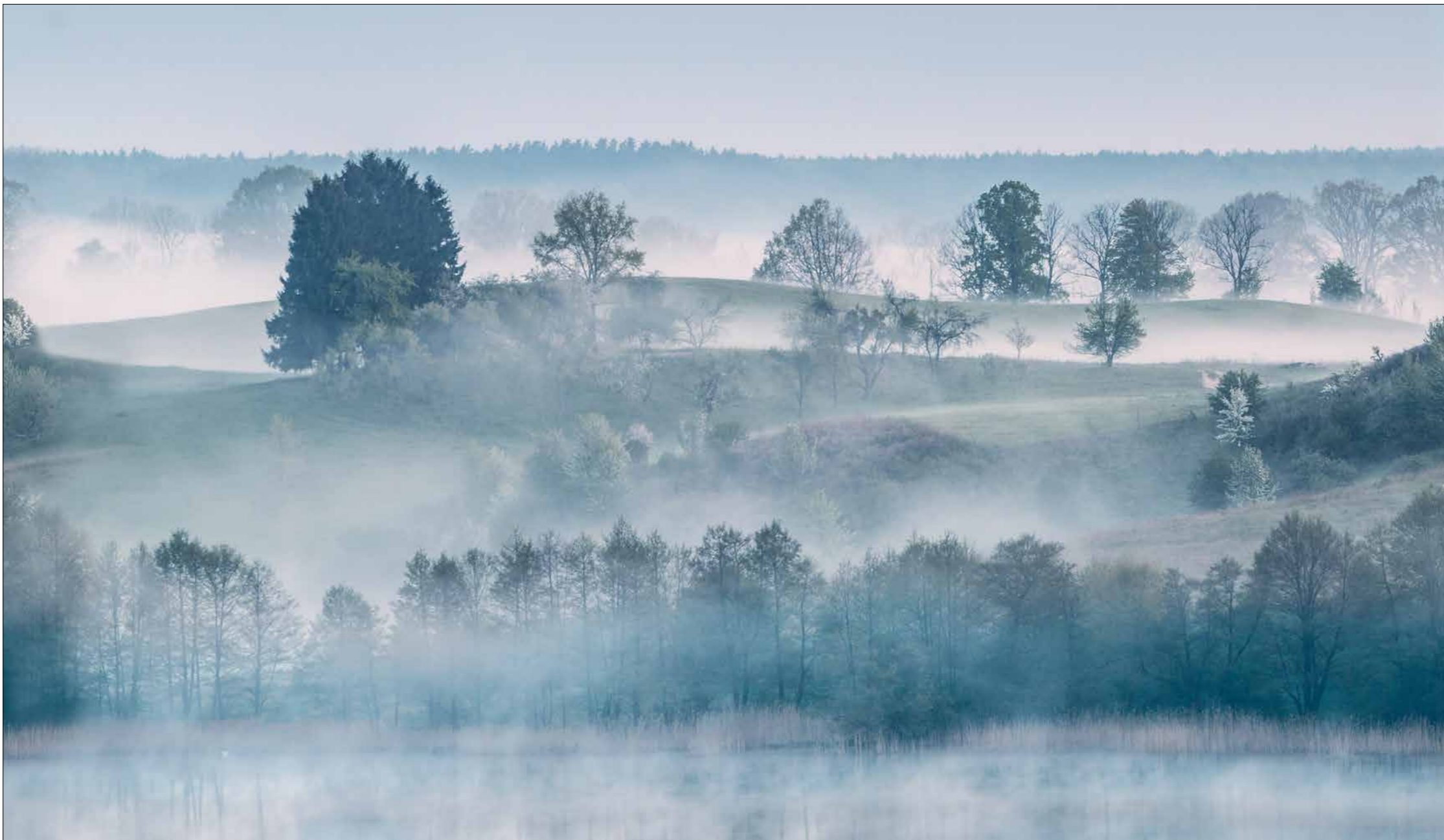



View lighting as a headline for the purpose of the surface.



Morning Haze

Breathe in the clear morning air from the dewy fields of this wonderful landscape.

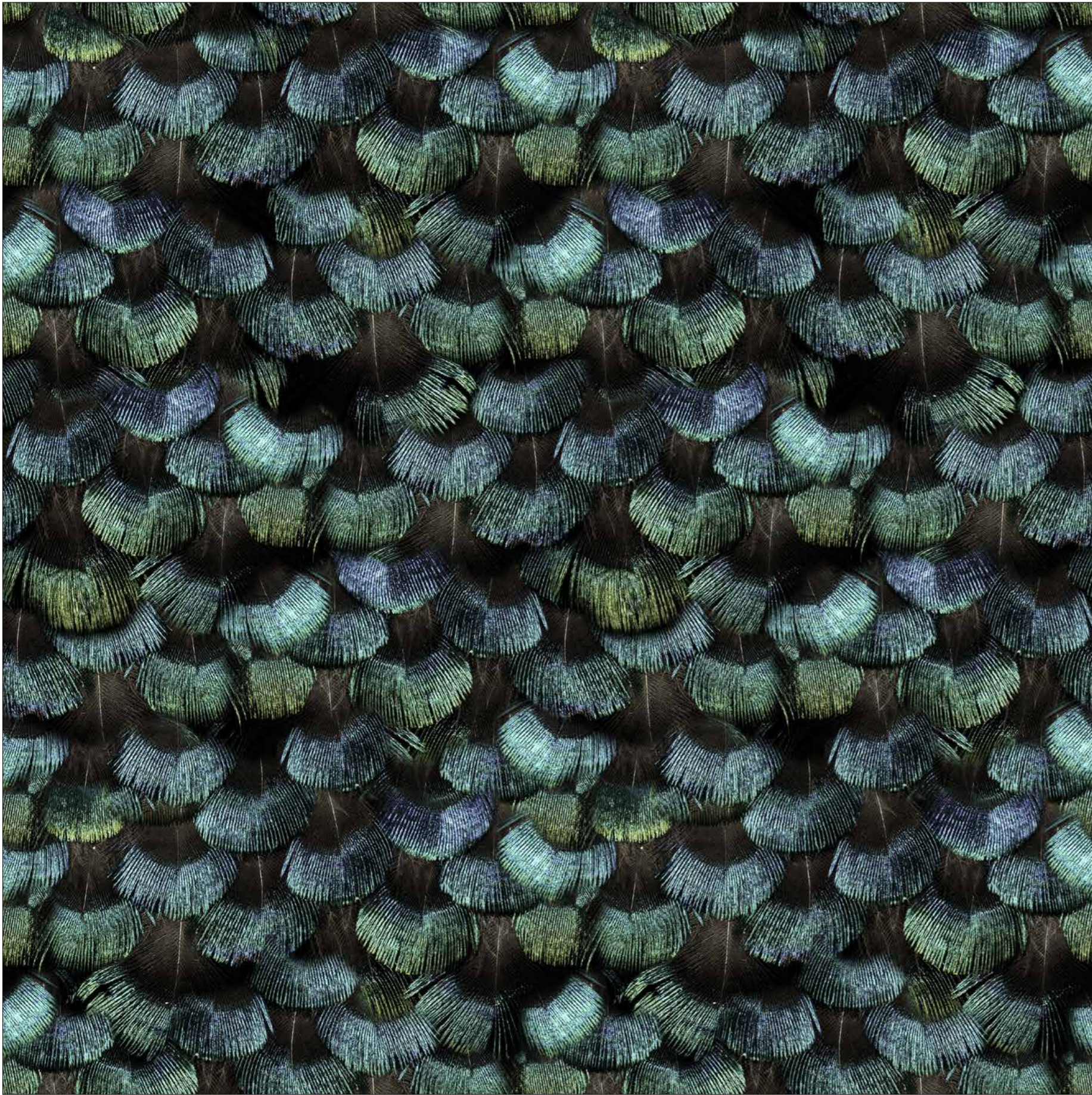



R15291 



Peacock Plumage


Mysterious shimmer in gemstone colors from a peacock's captivating plumage.



R15091 






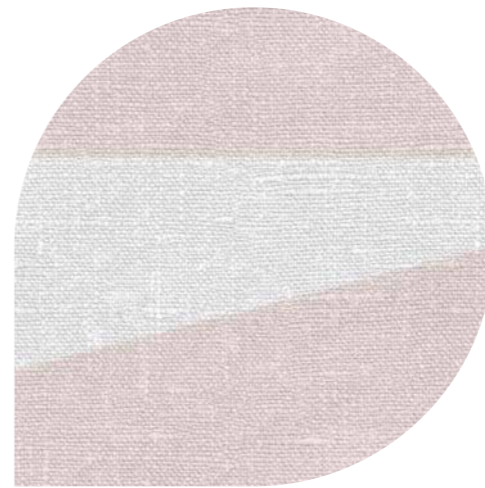
R15141 

Sailor's Sea

Discover new directions and crossings with eternal lines on a beautiful linen structure. Works magic when used on more than one wall!



R15142 





Hampton Pier

Nothing brings calm like the sounds of the ocean.
Add that wonderful sensation to a room for daily recovery.




R15261



Timberland

Soft light forces its way between the tree trunks in a delicate pattern creating depth.



R15281 



RELAX 41
REBEL WALLS #9 | HOME

WORK

The home office is where ideas become action. The place to think outside the box and make tomorrow awesome.

Use pinboards as an area to collect your thoughts and ideas.




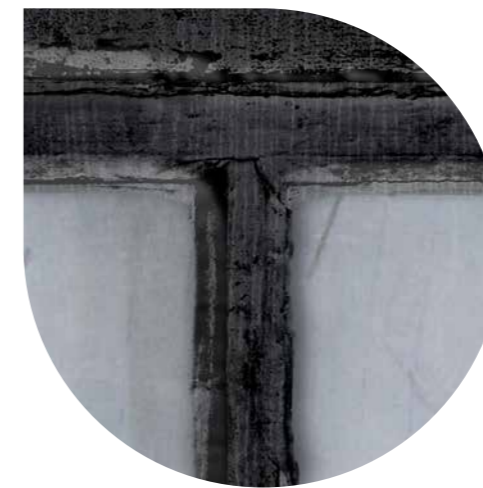


Cabin

Was that a deer just passing by?
Look closely through your own cabin windows to see the forest life.



R15341 






Metal Gradient

An intriguing yet discrete gradient makes an appealing background for many different types of interior design.



R14911 



oct


WORK 47

REBEL WALLS #9 | HOME

Around the World

Whether you're planning to conquer the world or just planning a trip, this world map wall mural will inspire you.



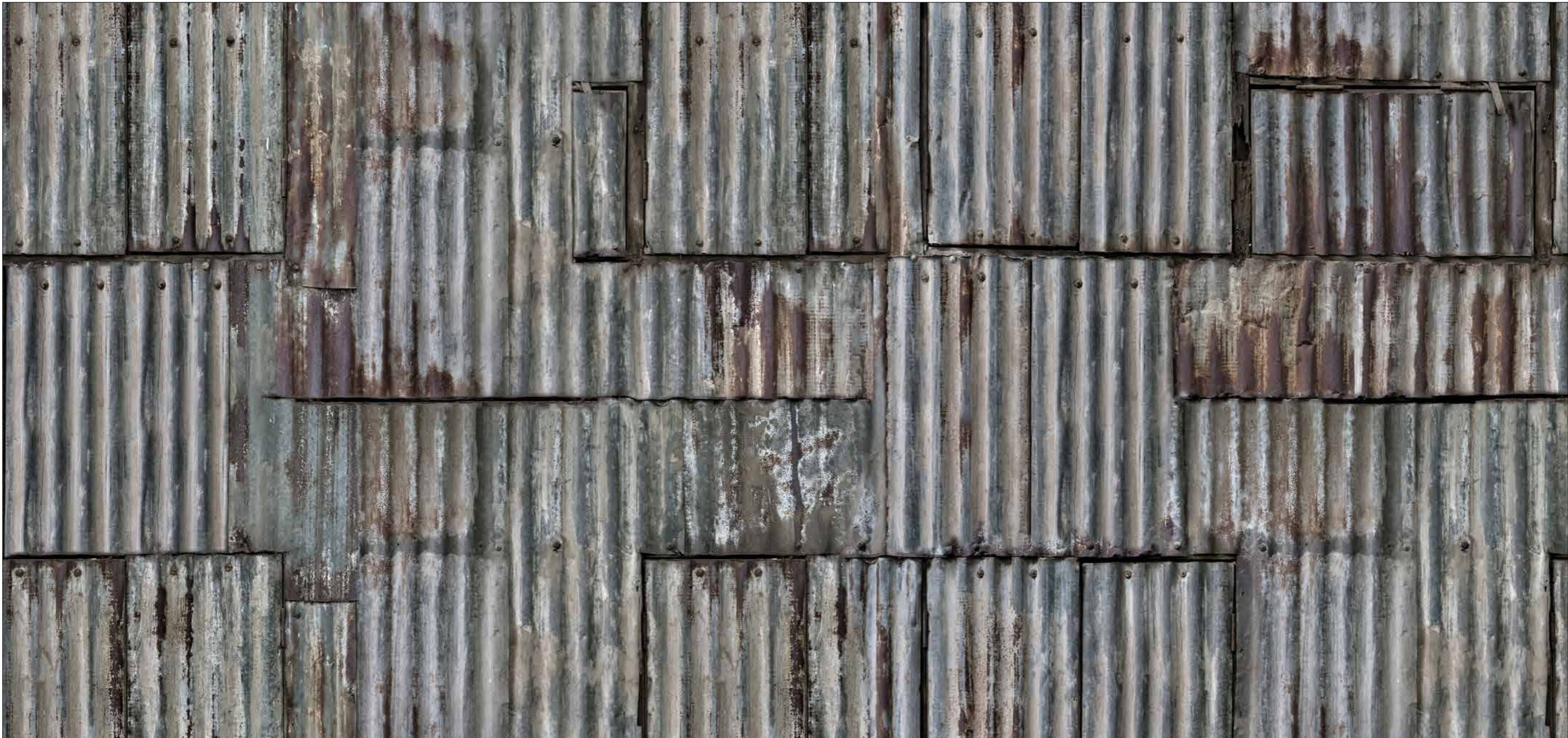
R15351 


Choose your own world view with this spinnable world map design! Enter your wall dimensions on the website and find your favorite spot in the world.




Backyard

For the industrial interiors, corrugated sheets play the perfect part.



R15241 



R15242 



oct


WORK 51

REBEL WALLS #9 | HOME

Secret Garden, Bali Boards

Wooden boards with a delicate, hand-drawn jungle motif.



R14702 





oct

WORK 53

REBEL WALLS #9 | HOME

PLAY


A room for play is for all ages. It is the space where creativity resides and dreams are invented.



Create different areas for various adventures.






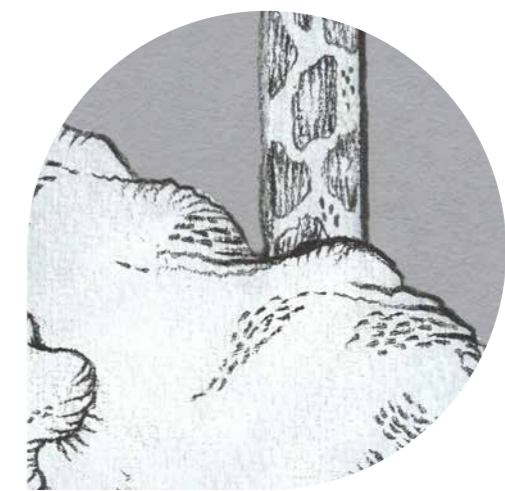
R15331 

Animal Tree

At first glance a traditional tree pattern, but a second look unfolds patterns from all kinds of animals.



R15332 





Magical Alley


Only your imagination can tell where this path leads.
Perhaps the destination changes from day to day?



R15251






R15311 

Camping Trip

Just add an actual bag of marshmallows and a campfire outside for the ultimate cozy experience.



R15312 





R15271 **R**

Animal Party

Cheetahs, zebras, elephants, monkeys and flamingos living in perfect harmony among the palm trees.



R15272 **R**

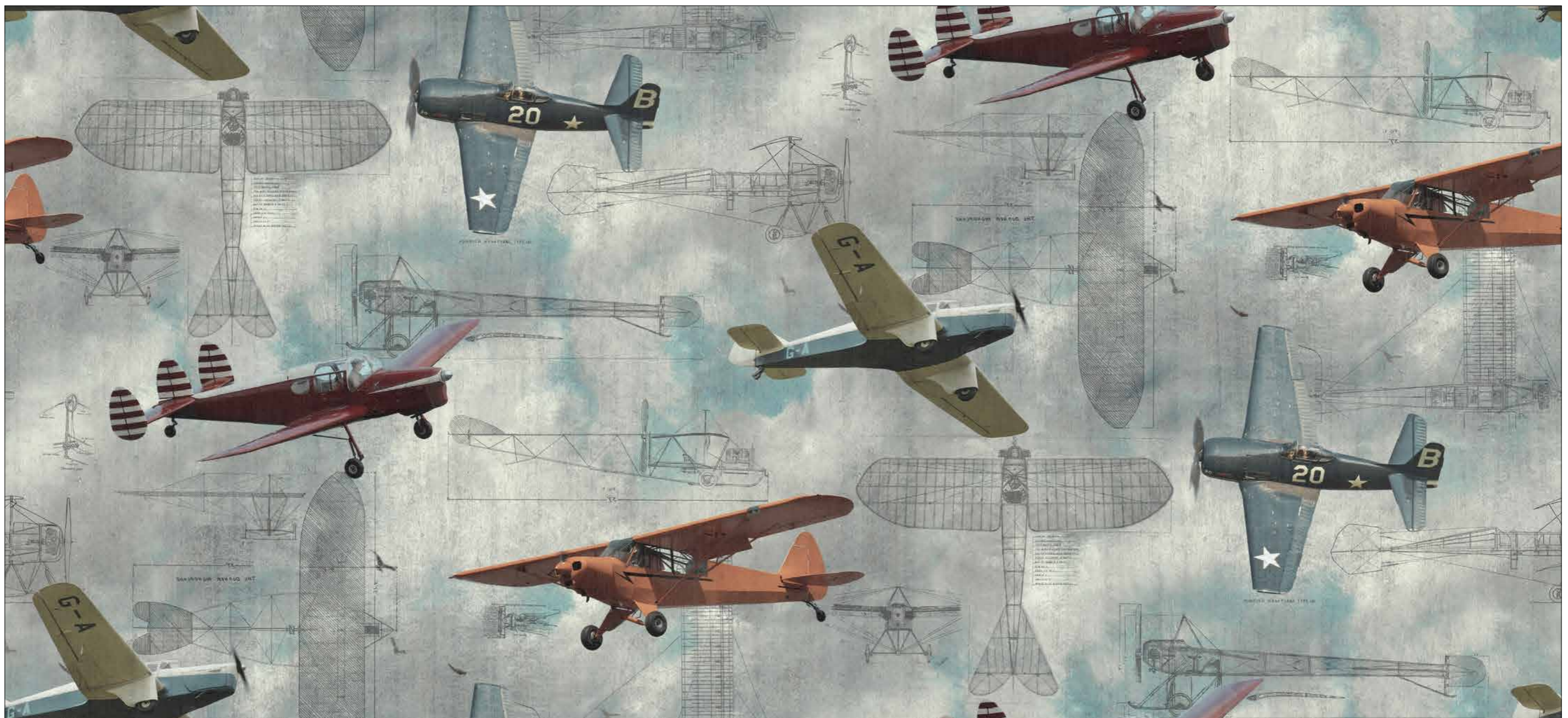



R15273 **R**



Aero Show

Up, up and away!
Aero design for the young explorers and the old adventurers.



R15211 



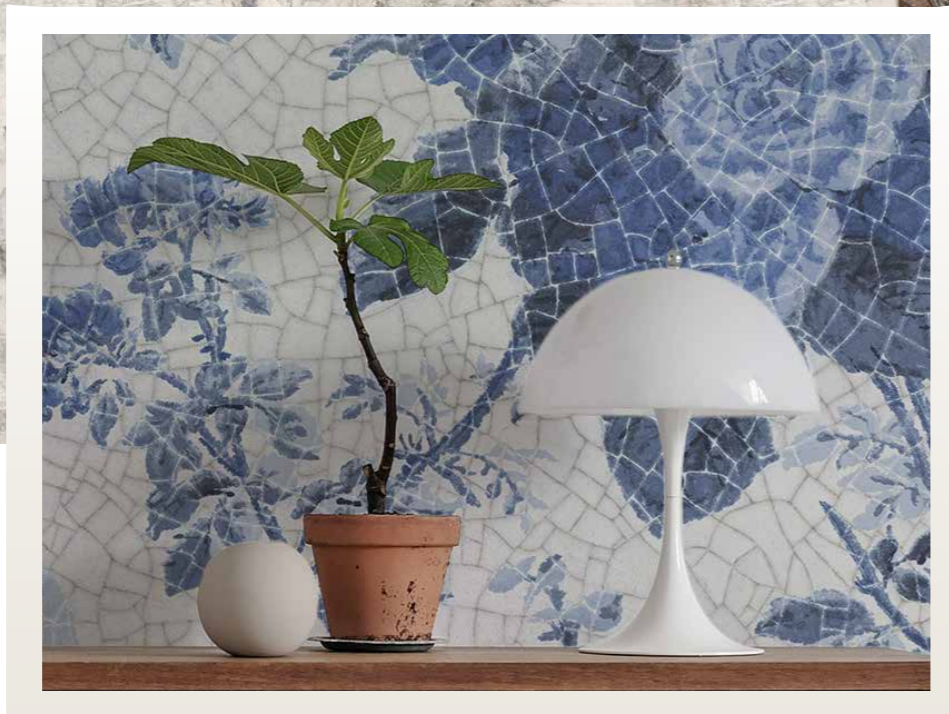
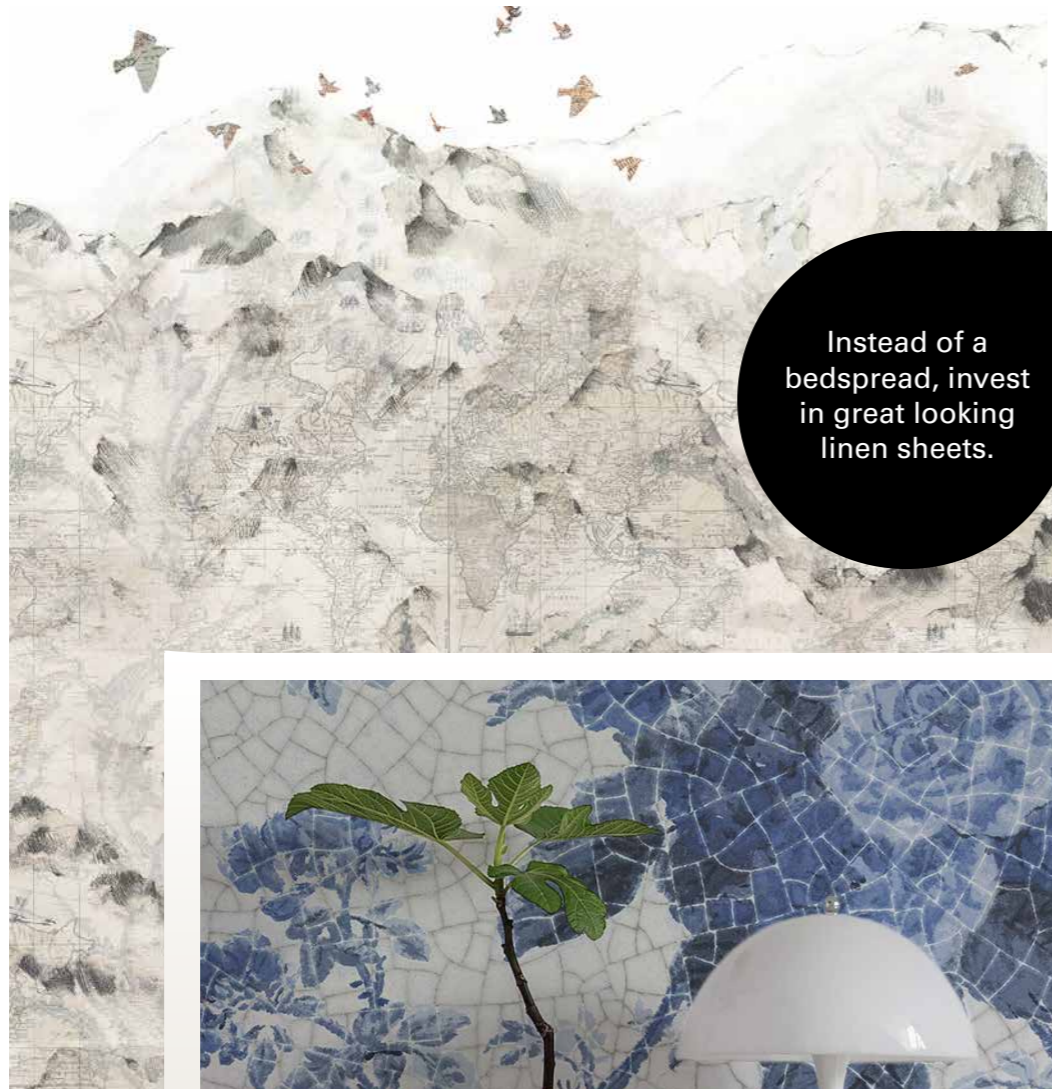


SLEEP

The bedroom is where you rewind the day and turn off the speed. It is the sanctuary of the soul.



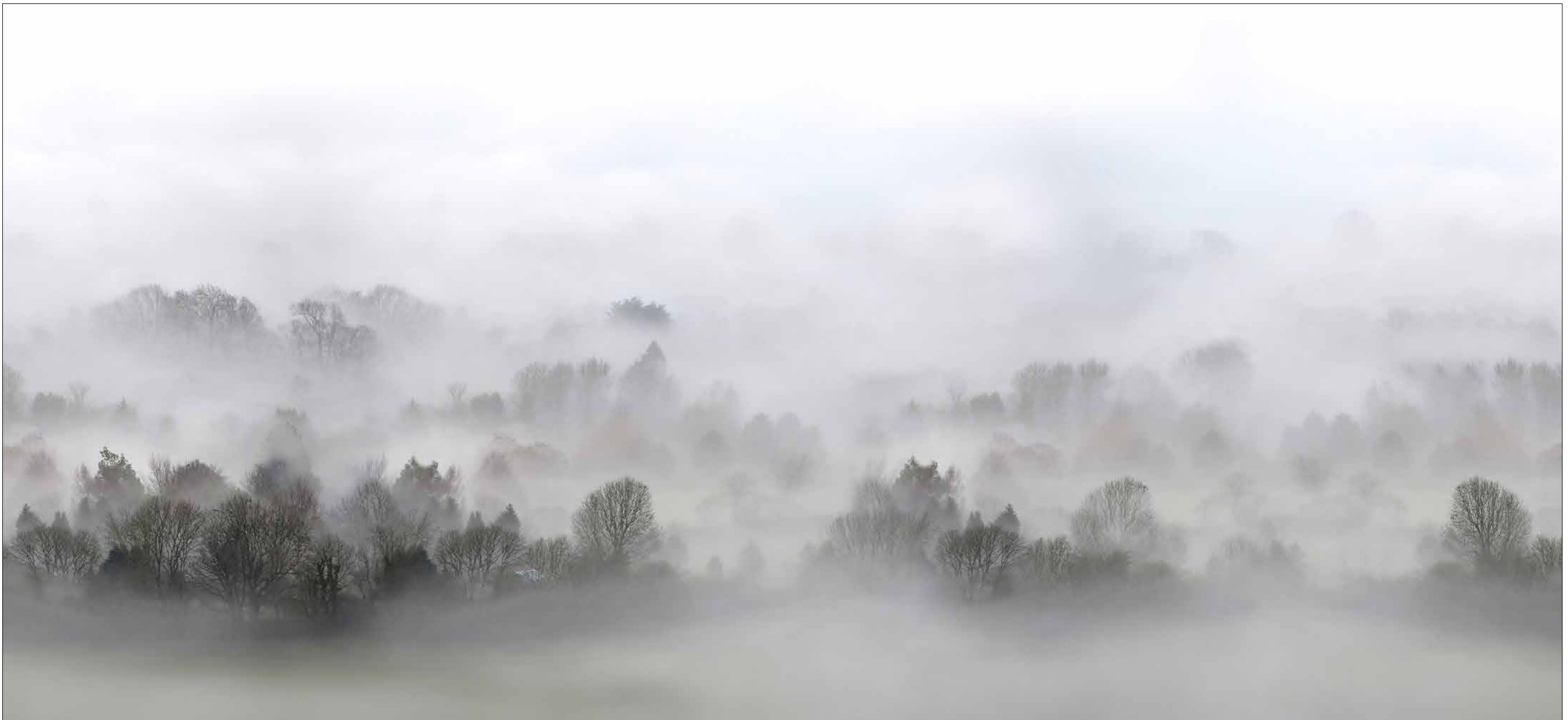
Instead of a bedspread, invest in great looking linen sheets.






Morning Fog

Fog among the trees creates a soft gradient grayscale.

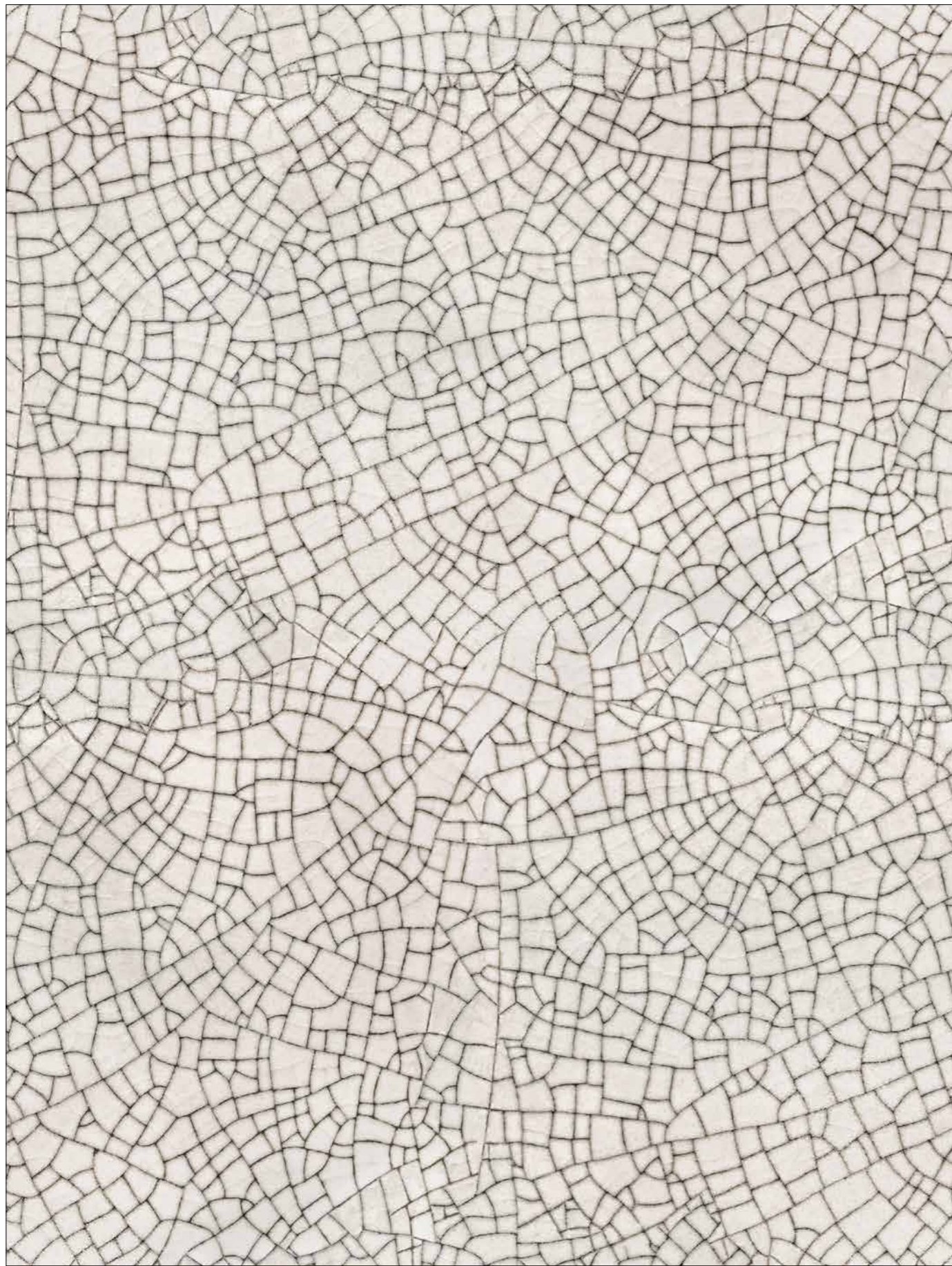


R15301 

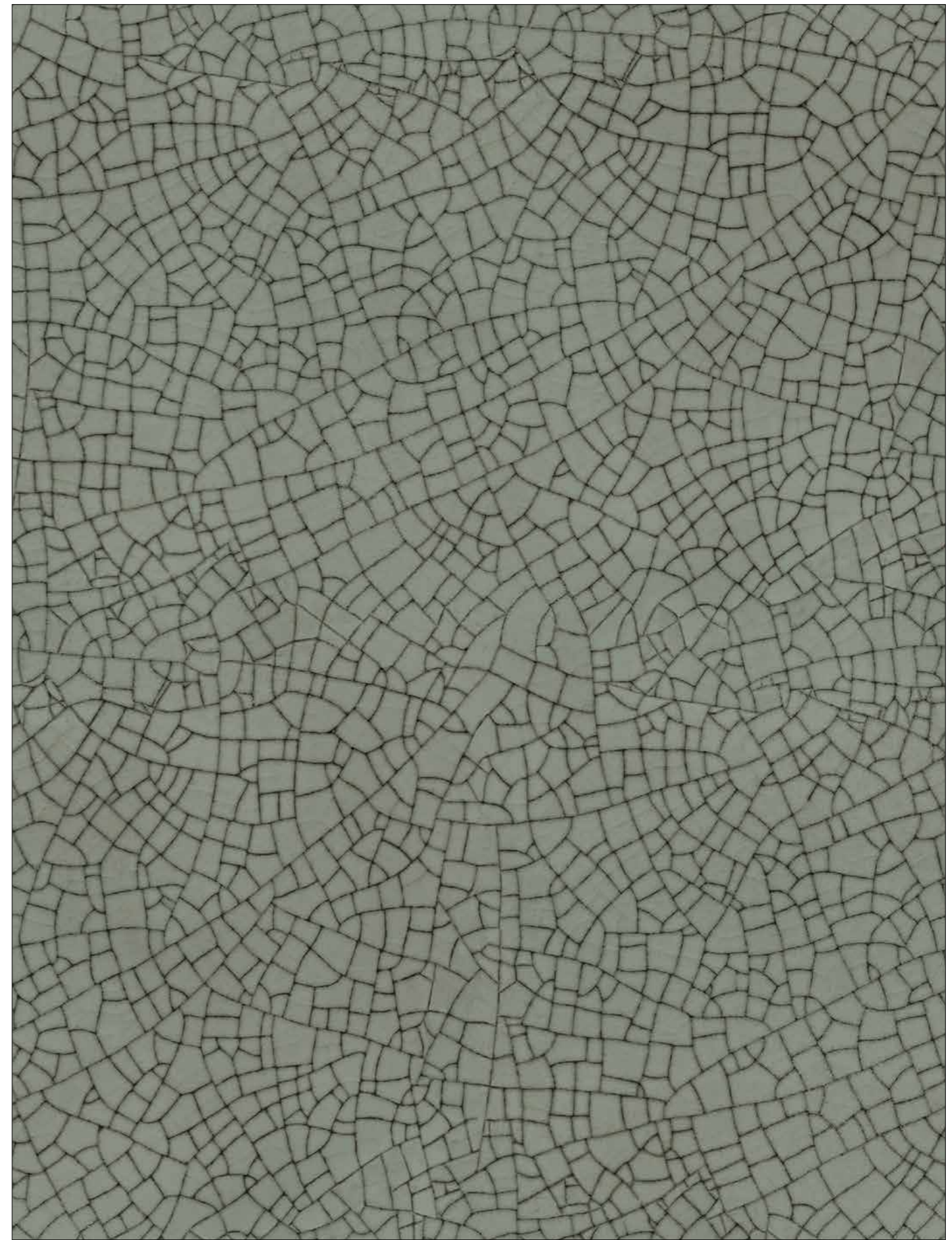


Raku Crackle

Nature brings the beauty of imperfection. A graphic line pattern that adds structure to the room in an earthy, dynamic way.



R14671 **R**




R14672 **R**




Porcelain

Grandmother's teacups worn by time
in a magnified and elegant wallpaper design.



R13254 

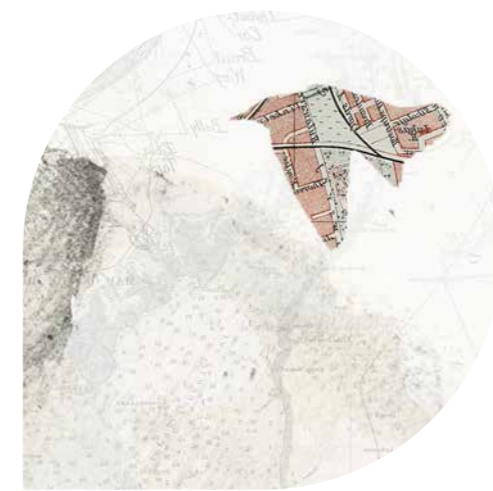



R13255 



Paper Mountains

Sheer maps in layers upon layers meet illustrations and the soft grayness of the graphite pencil.



R13871 



Birds of Paradise, Tiles

Decorative hummingbirds hovering on vintage tiles in a jade composition.



R15071 



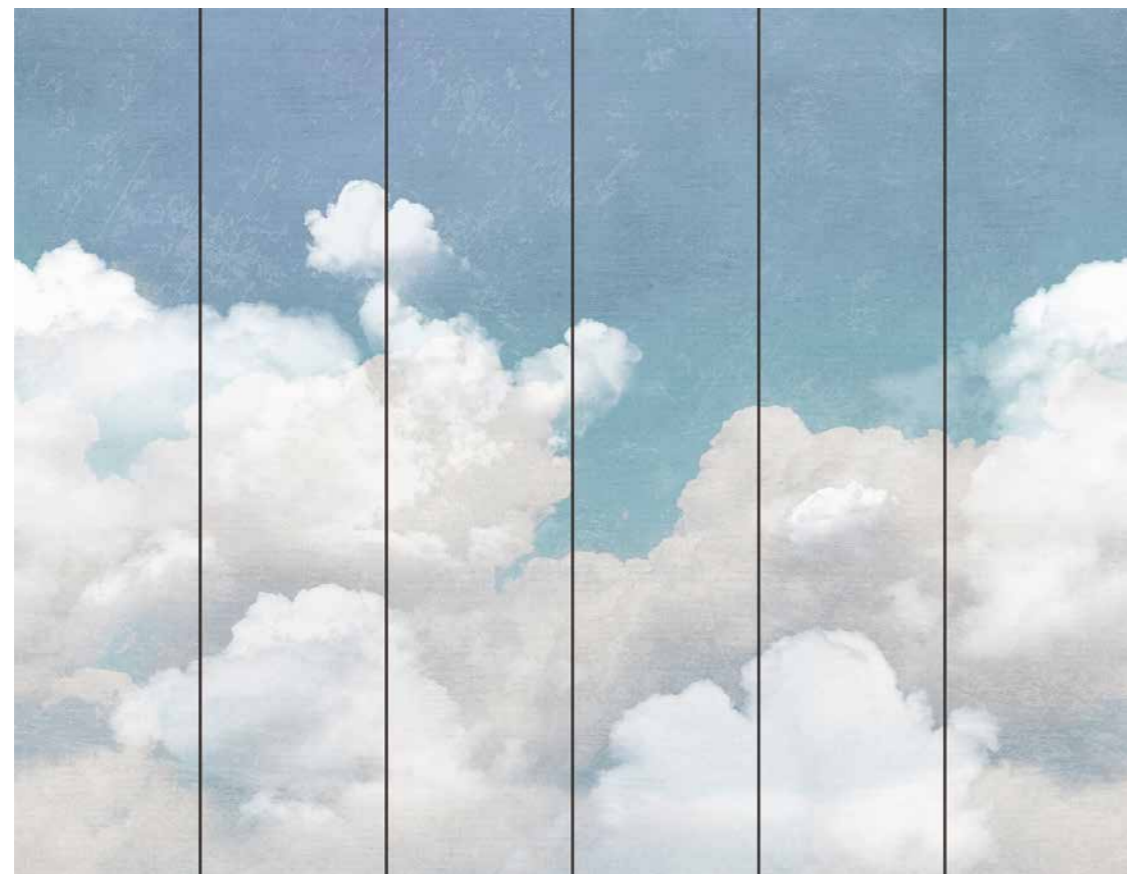
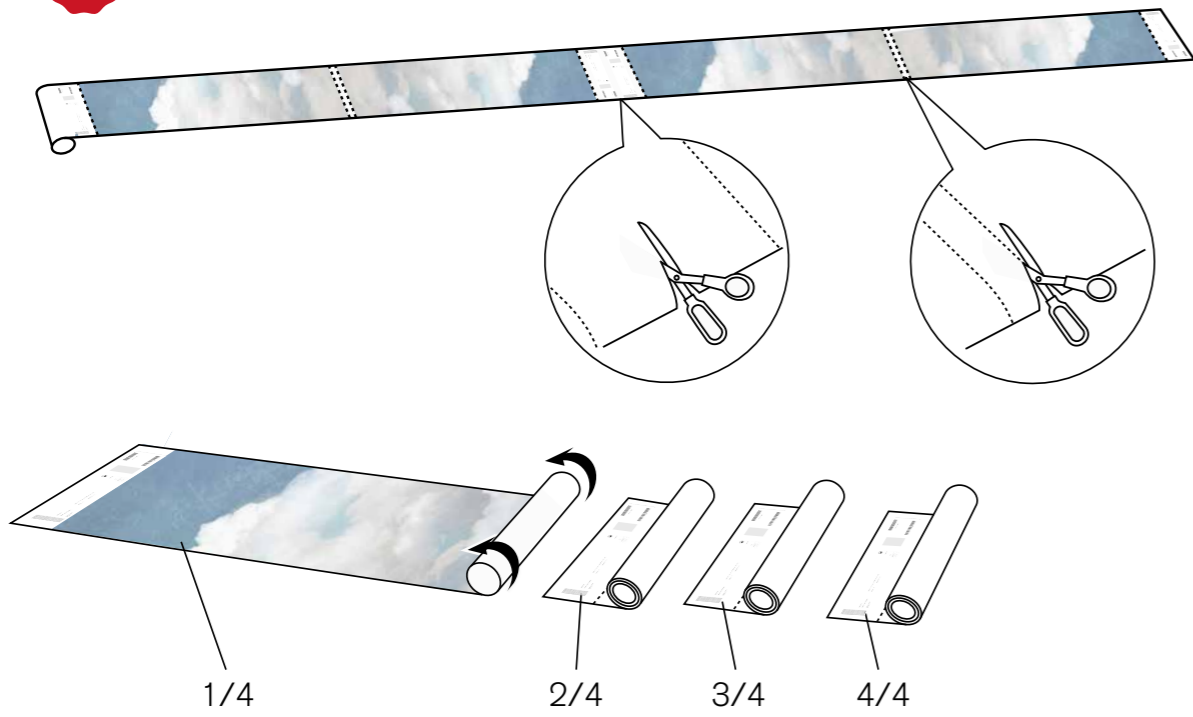


HANGING INSTRUCTIONS

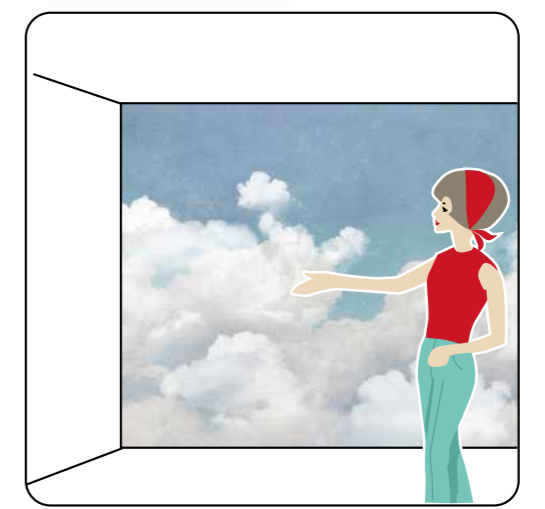
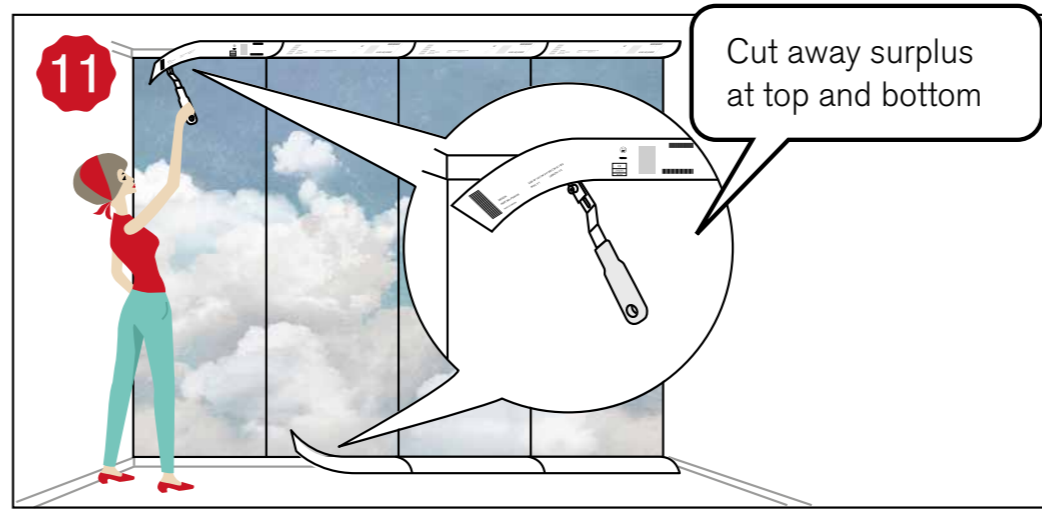
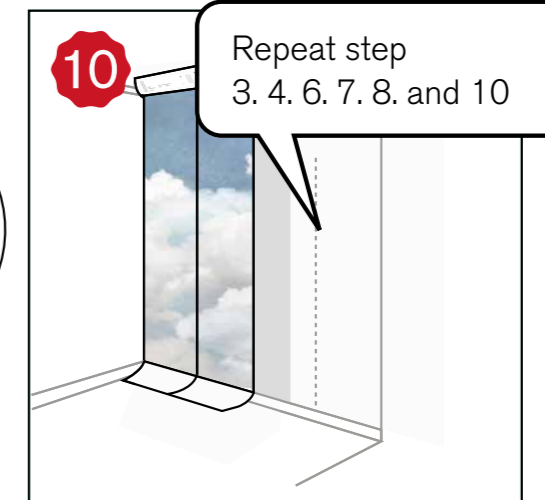
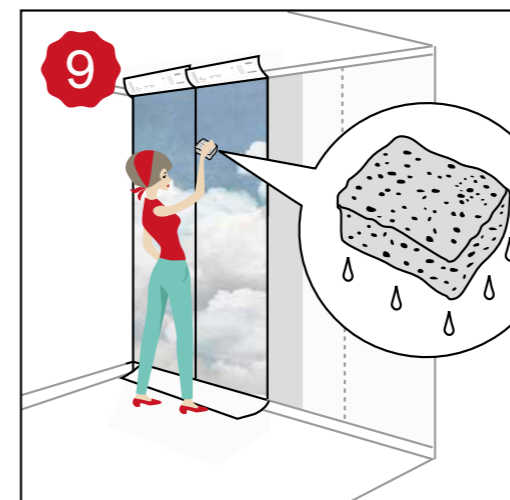
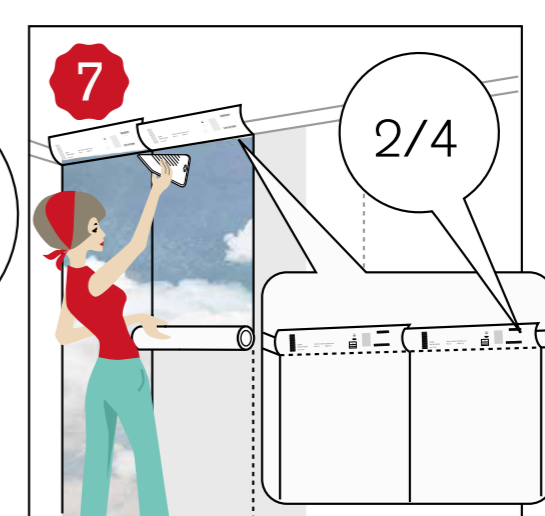
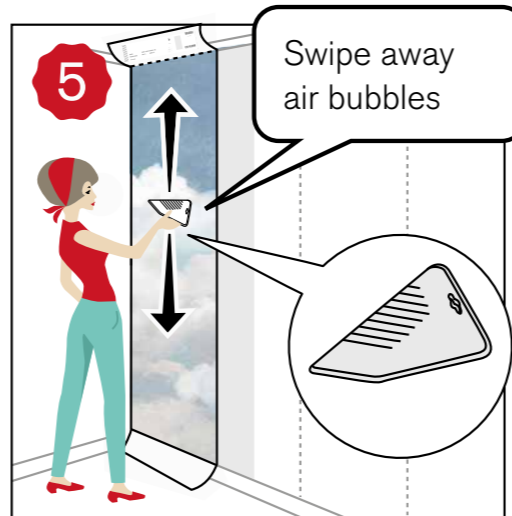
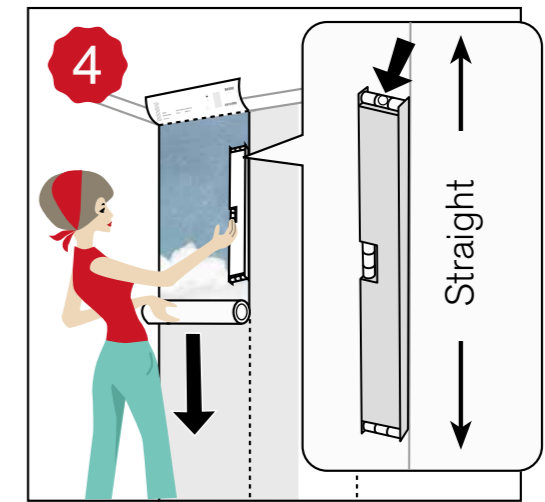
Follow these hanging instructions and your wallpaper will be up in no time!

→|← = STRAIGHT MATCH

1



45 CM





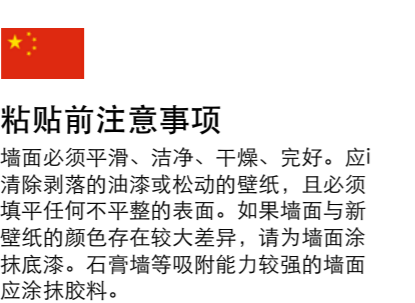
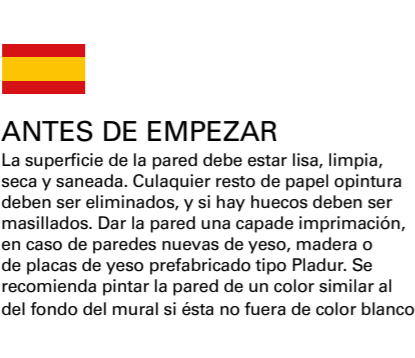
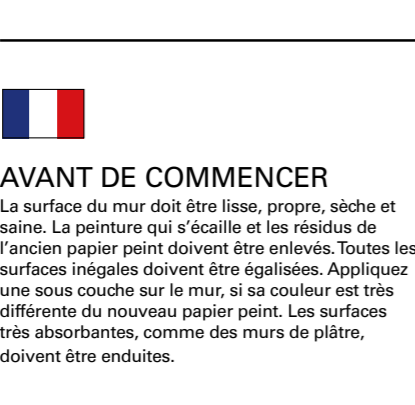
BEFORE YOU BEGIN

The surface of the wall must be smooth, clean, dry and sound. Flaking paint and loose wallpaper should be removed, and any uneven surfaces must be filled. Give the wall a prime coating if its colour is very different to the new wallpaper. Very absorbent surfaces, such as plaster walls, should be sized.



FÖRETAPETSERING

Väggen ska vara slät, ren, torr och väl förankrad. Gammal färg och tapet som inte sitter fast måste tas bort och spacklas över vid behov. Grundmåla om väggen har starka färgskiftningar. Förlimma om underlaget är starkt sugande, som exempelvis en gipsvägg.

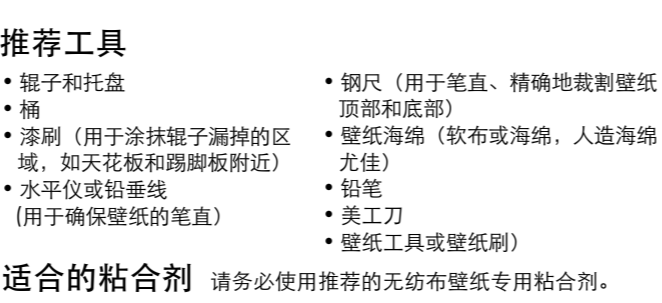
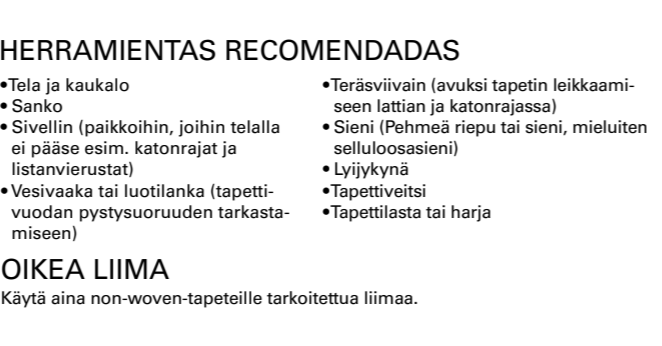
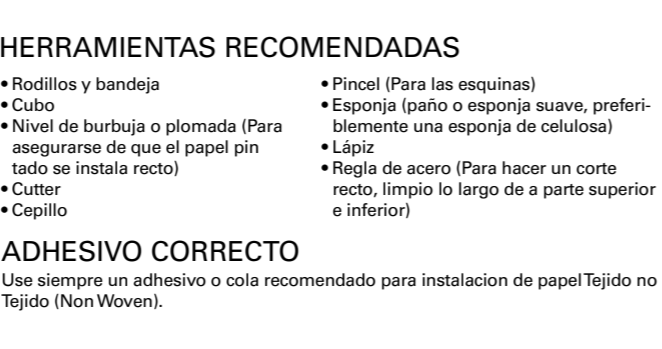
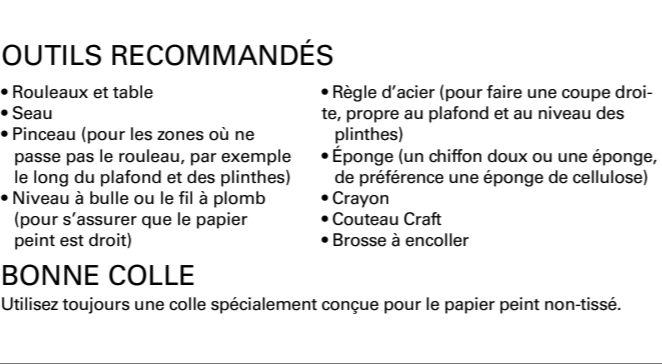
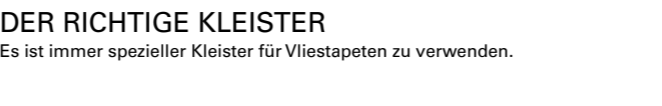
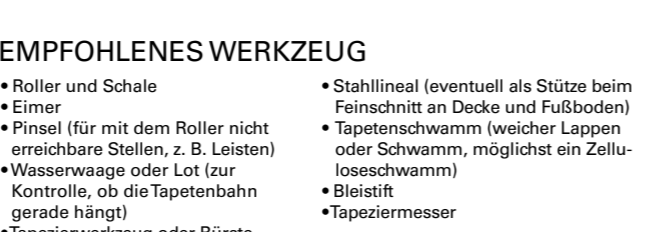
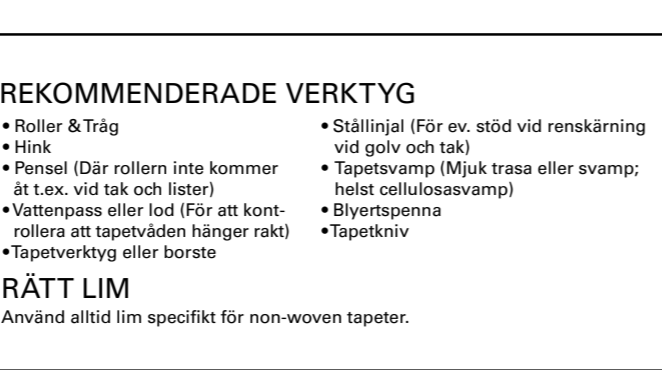


RECOMMENDED TOOLS

- Rollers and tray
- Bucket
- Pencil
- Craft knife
- Paintbrush (For the areas that the roller misses, e.g. along the ceiling and skirting boards)
- Stållinjal (För ev. stöd vid renskärning vid golv och tak)
- Tapetsvamp (Mjuk trasa eller svamp; helst cellulossavamp)
- Blyertsenna
- Tapetkniv

RIGHT ADHESIVE

Always use an adhesive specially recommended for non-woven wallpaper.



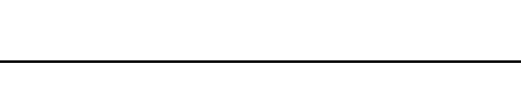
HANGING WALLPAPER 1

Start by dividing the lengths as indicated by the cutting symbols. Lay the lengths, with the label facing upwards, in numerical order starting with length number 1. Make sure you have all the lengths and that none of them are defective or damaged.

2-10. The lengths are numbered in the order in which they must be hung. The lengths should be hung edge to edge without any overlapping. It is essential that the first length is vertically straight. Tip: Make a pencil mark one wallpaper width along the wall near the ceiling. Hold a plumb line on the mark and draw

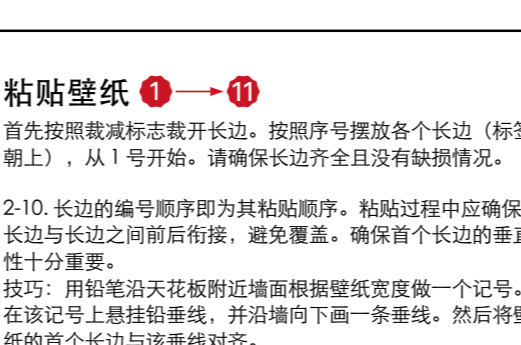
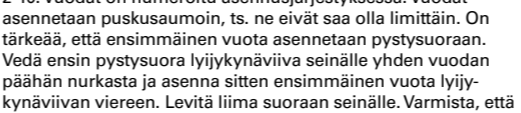
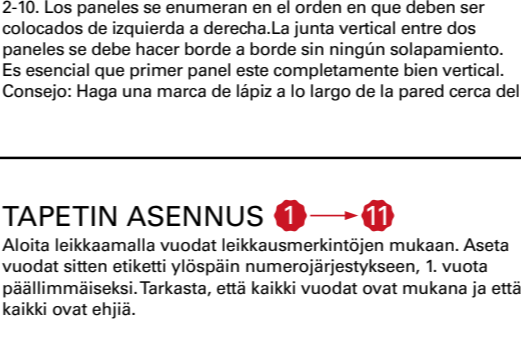
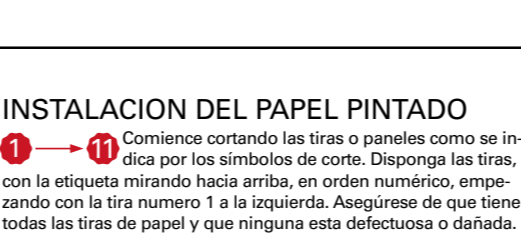
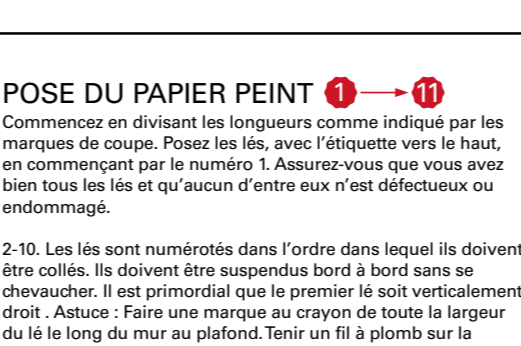


Börja med att dela isär väderna enligt skärmarkeringarna. Lägg sedan väderna med etiketten uppåt i nummerordning med våd nr.1 först. Kontrollera att alla våder är med och ingen våd är defekt eller skadad.



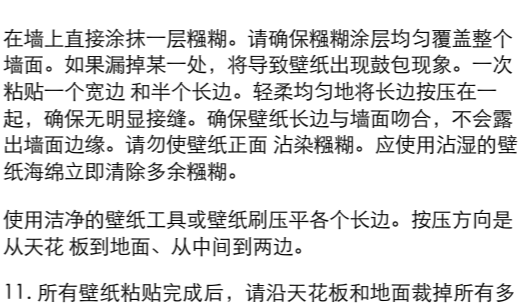
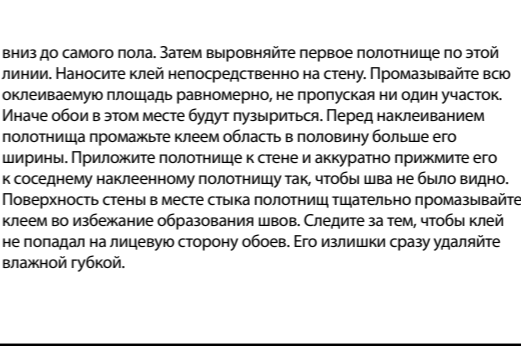
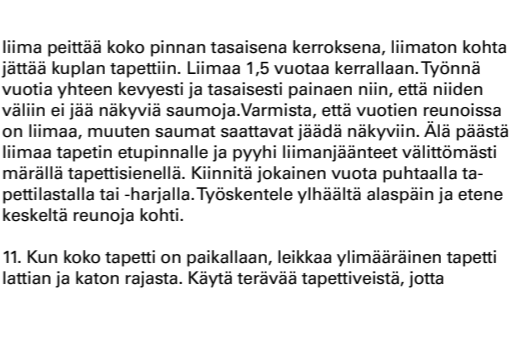
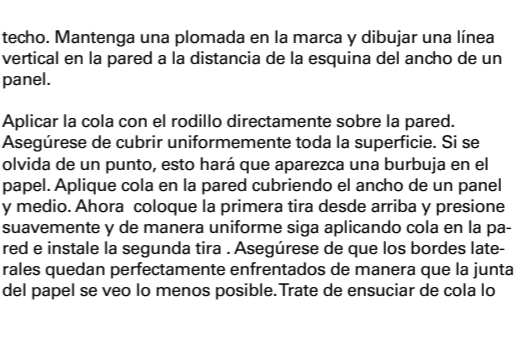
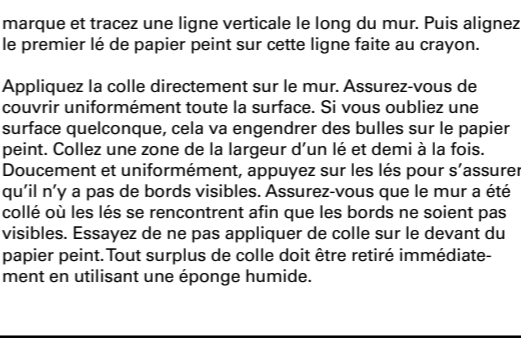
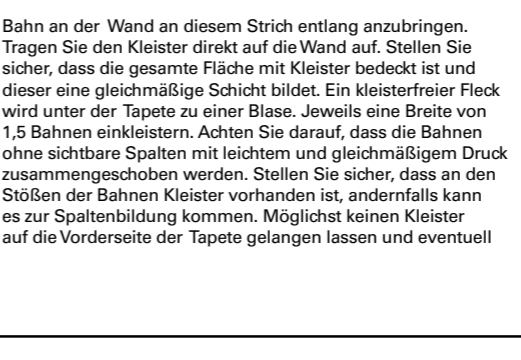
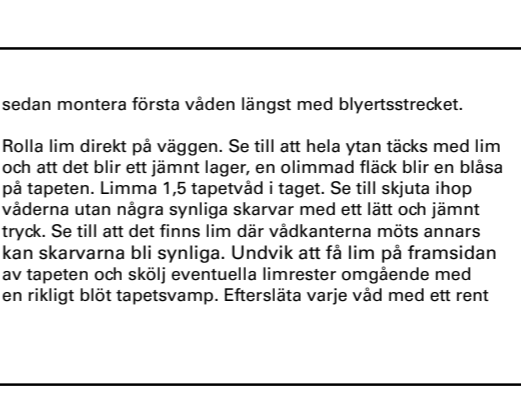
Zunächst die Bahnen den Schnittmarkierungen entsprechend abschneiden. Danach sind sie, beginnend mit Bahn Nr.1, in Nummernreihenfolge mit dem Etikett nach oben auszubreiten. Überprüfen Sie bitte, ob alle Bahnen vorhanden sind und keine beschädigt oder fehlerhaft ist.

2-10. Alle Bahnen sind in der Reihenfolge nummeriert, in der sie anzubringen sind. Sie sind auf Stoß anzubringen, dürfen sich also nicht überlappen. Es ist wichtig, dass die erste Bahn vertikal gerade angebracht wird. Hierfür empfiehlt sich, einen ausgete-ten senkrechten Strich mit dem Bleistift zu ziehen und die erste

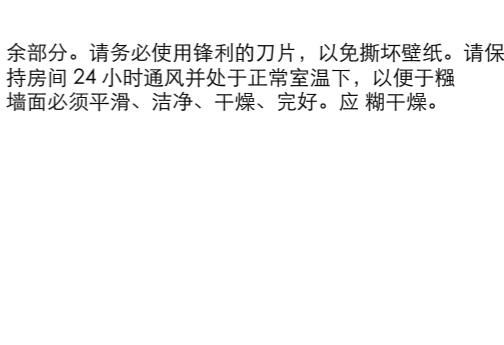
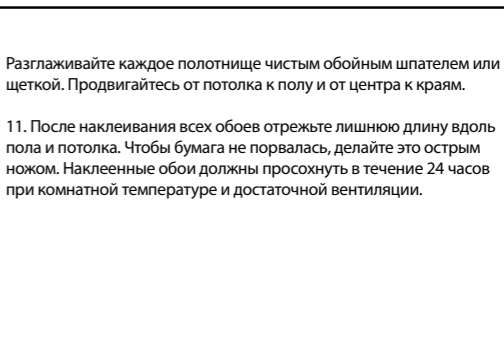
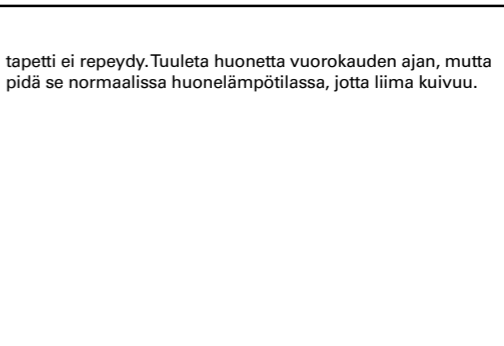
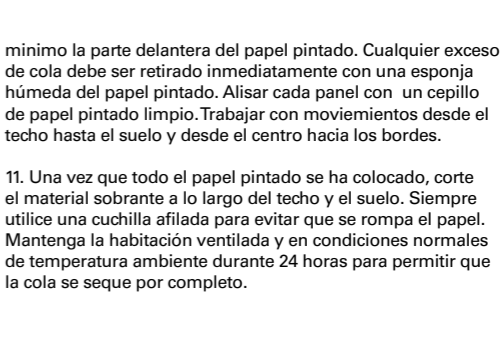
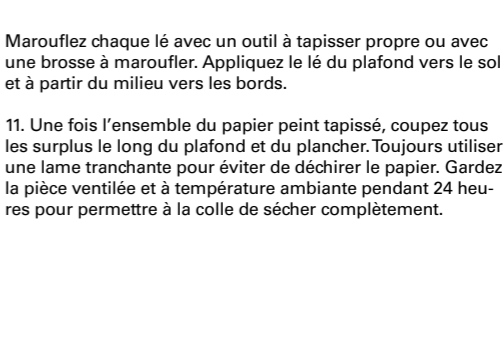
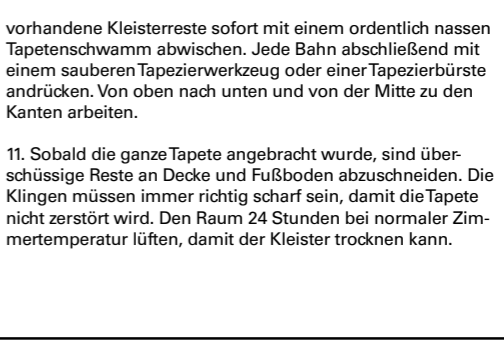
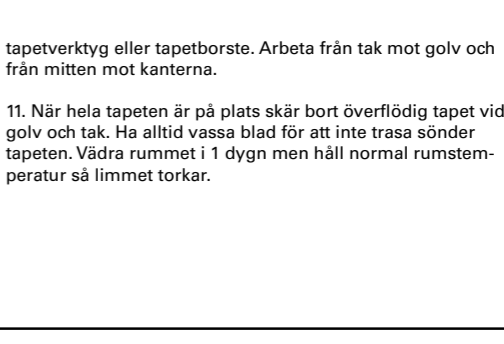
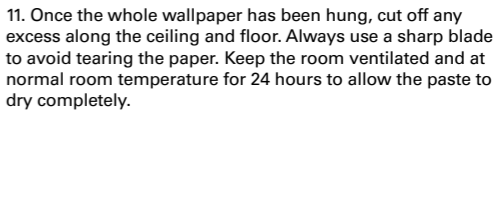


a vertical line down the wall. Then line up your first length of wallpaper with this pencil line.

Roll the paste straight onto the wall. Be sure to evenly cover the entire surface. If you miss a spot, this will cause the wallpaper to bubble. Paste an area the width of one and a half lengths at a time. Gently and evenly press the lengths together to ensure there are no visible seams. Make sure the wall has been pasted where the lengths meet so that the edges are not visible. Try not to get paste on the front of the wallpaper. Any excess paste should be removed immediately using a wet wallpaper sponge.



Smooth each length with a clean wallpapering tool or wallpaper brush. Work from the ceiling to the floor and from the middle out to the edges.



INSTRUCTIONS 79

REBEL WALLS #9 | HOME



R15201 | FOREST GLADE **R**



R14701 | BALI BOARDS **R**



R14981 | BROOKLYN WALL **R**



R15221 | METAL BIRCH **R**



R15161 | WEST COAST **R**



R15162 | WEST COAST, PALE **R**



R15321 | CACTUS WALL ART **R**



R15322 | CACTUS WALL ART, FADED **R**



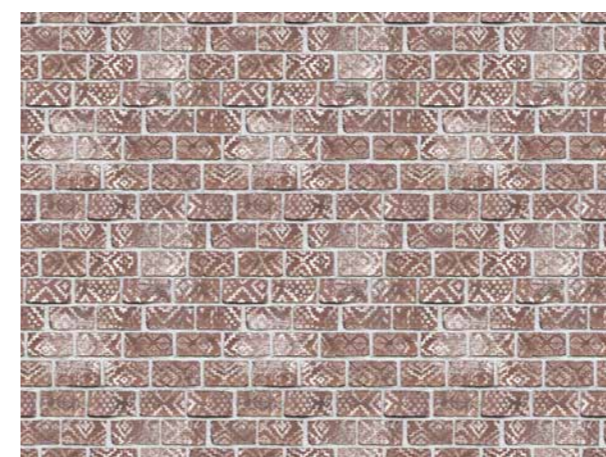
R14781 | FISHBONE TILES **R**



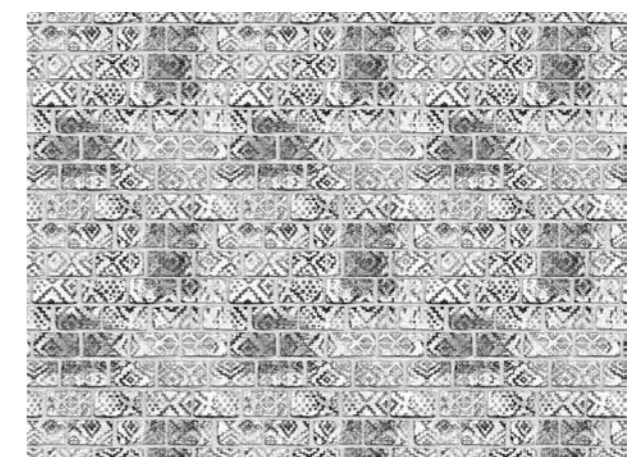
R15181 | MARBLE ART **R**



R15191 | VENICE



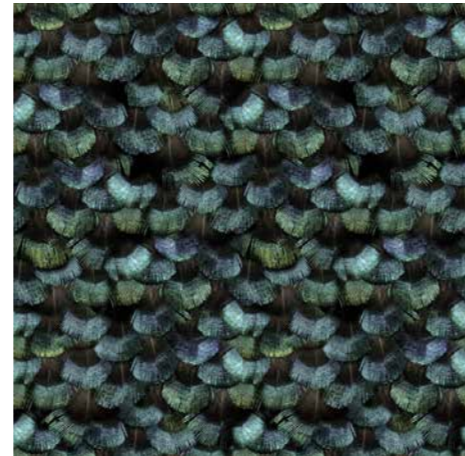
R15231 | DECORATED BRICKS, RED **R**



R15232 | DECORATED BRICKS **R**



R15291 | MORNING HAZE **R**



R15091 | PEACOCK PLUMAGE **R**



R15141 | SAILOR'S SEA **R**



R15142 | SAILOR'S SEA, PINK **R**



R15261 | HAMPTON PIER



R15281 | TIMBERLAND **R**



R15341 | CABIN **R**



R14911 | METAL GRADIENT **R**



R15351 | AROUNDTHE WORLD **R**



R15241 | BACKYARD **R**



R15242 | BACKYARD, RAW **R**



R14702 | SECRET GARDEN, BALI BOARDS **R**



R15331 | ANIMAL TREE **R**



R15332 | ANIMAL TREE, GREY **R**



R15251 | MAGICAL ALLEY



R15311 | CAMPING TRIP **R**



R15312 | CAMPING TRIP, GREY **R**



R15271 | ANIMAL PARTY **R**



R15272 | ANIMAL PARTY, YELLOW **R**



R15273 | ANIMAL PARTY, BLACKBOARD **R**



R15211 | AERO SHOW **R**



R15301 | MORNING FOG **R**



R14671 | RAKU CRACKLE, CREAM **R**



R14672 | RAKU CRACKLE, JADE **R**



R13254 | PORCELAIN **R**



R13255 | PORCELAIN, BLUE **R**



R13871 | PAPER MOUNTAINS **R**



R15071 | BIRDS OF PARADISE, TILES **R**

HOW IT WORKS

- 1) Select your wallpaper from the collection book or on our website.
- 2) Measure the width and the height of your wall.
- 3) Add the width and height of your wall to your order. We produce the wallpaper with your measurements and deliver in a few days.

ARTICLE NO	NAME	PAGE	ARTICLE NO	NAME	PAGE
R15201	Forest Glade	8-9	R15351	Around the World	48-49
R14701	Bali Boards	10-11	R15241	Backyard	50-51
R14981	Brooklyn Wall	12-13	R15242	Backyard, Raw	50-51
R15221	Metal Birch	14-15	R14702	Secret Garden, Bali Boards	52-53
R15161	West Coast	16-17	R15331	Animal Tree	56-57
R15162	West Coast, Pale	16-17	R15332	Animal Tree, Grey	56-57
R15321	Cactus Wall Art	20-21	R15251	Magical Alley	58-59
R15322	Cactus Wall Art, Faded	20-21	R15311	Camping Trip	60-61
R14781	Fishbone Tiles	22-23	R15312	Camping Trip, Grey	60-61
R15181	Marble Art	24-25	R15271	Animal Party	62-63
R15191	Venice	26-27	R15272	Animal Party, Yellow	62-63
R15231	Decorated Bricks, Red	28-29	R15273	Animal Party, Blackboard	62-63
R15232	Decorated Bricks	28-29	R15211	Aero Show	64-45
R15291	Morning Haze	32-33	R15301	Morning Fog	68-69
R15091	Peacock Plumage	34-35	R14671	Raku Crackle, Cream	70-71
R15141	Sailors's Sea	36-37	R14672	Raku Crackle, Jade	70-71
R15142	Sailors's Sea, Pink	36-37	R13254	Porcelain	72-73
R15261	Hampton Pier	38-39	R13255	Porcelain, Blue	72-73
R15281	Timberland	40-41	R13871	Paper Mountains	74-75
R15341	Cabin	44-45	R15071	Birds of Paradise, Tiles	76-77
R14911	Metal Gradient	46-47			

BE A REBEL
CLAIM YOUR SPACE
It's only wallpaper

ABOUT US

Rebel Walls is a Swedish wallpaper company with design studio and production in Borås. The company offers a wide selection of designer wallpapers as well as the opportunity to create designs of your own. Rebel Walls' production is environmentally friendly in waste and energy usage.



Thanks to our digital printing technique and proximity to our production, we can offer a diverse and on-trend selection of wall murals.



REBEL WALLS • +46 (33) 20 80 00 • WWW.REBELWALLS.COM • FACEBOOK, INSTAGRAM AND PINTEREST: #REBELWALLS



BE A REBEL – CLAIM YOUR SPACE